

Trennwand FERRO-Wall

VKF-BZU-Nr.

EI 60

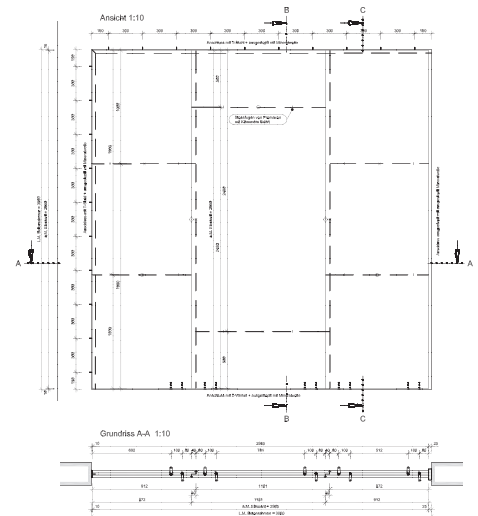
Feste Trennwandkonstruktion

Innenschicht: Fabr. Promat, Promaxon
2 x 15mm Stärke
verleimt

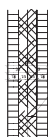
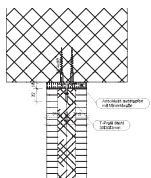
Aussenschicht: Spanplatte
Stärke 18mm
verleimt

Anschlüsse: ausgestopft mit Mineralwolle

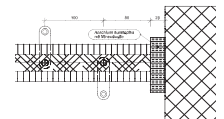
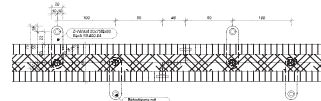
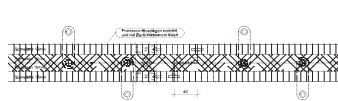
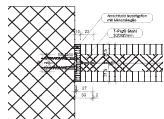
Breite geprüft: endlos
Höhe geprüft: 299cm, maximale Bauhöhe 400cm
Stärke: 66mm



Schnitt-Detail B-B 1:2



Grundriss-Detail A-A 1:2



Schreinerei / Innenausbau
8450 Andelfingen Thurtalstrasse 33

ROBERT
FEHR AG